

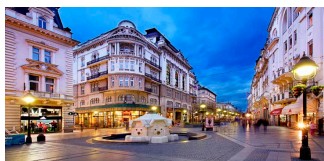
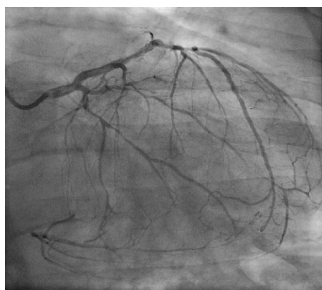
INTERNATIONAL SYMPOSIUM



RISKY CROSSROAD

DIABETES, CORONARY ARTERY DISEASE
AND HEART FAILURE

Hotel Metropol Palace, Belgrade, Serbia, September 28th-30th, 2017



ORGANIZED BY



Serbian Academy of Sciences and Arts

President, Academician Professor Vladimir Kostić, MD, PhD



University of Belgrade, Faculty of Medicine

Dean, Academician Professor Nebojša Lalić, MD, PhD



Clinical Center of Serbia

Associate Professor Milika Ašanin, MD, PhD



Heart Failure Society of Serbia

President, Professor Petar M. Seferović, MD, PhD, corresponding member of SASA
President-elect, Heart Failure Association of the ESC

PROMOTED BY:



FONDAZIONE
INTERNAZIONALE
MENARINI

ORGANIZED BY

- Serbian Academy of Sciences and Arts
- University of Belgrade, Faculty of Medicine
- Clinical Center of Serbia
- Heart Failure Society of Serbia

CO-PRESIDENTS OF THE MEETING

Professor Petar M. Seferović, MD, PhD

President-elect, HFA of ESC

Academician Professor Vladimir Kostić, MD, PhD

President, Serbian Academy of Sciences and Arts

Academician Professor Nebojša M. Lalić, MD, PhD

Dean, University of Belgrade, Faculty of Medicine

Associate Professor Milika Ašanin, MD, PhD

Director, Associate Professor Milika Ašanin, MD, PhD

PROMOTED BY

Fondazione Internazionale Menarini

Centro Direzionale Milanofiori

20089 Rozzano (Milan, Italy)

Edificio L - Strada 6

Phone: +39 02 55308110 - Fax +39 02 55305739

E-mail: milan@fondazione-menarini.it

website: www.fondazione-menarini.it



FONDAZIONE
INTERNAZIONALE
MENARINI

ORGANIZING SECRETARIAT AND PROVIDER:

Contatto S.r.l.

ECM ID 126

Via Vincenzo Lancia, 27 - I-10141 Turin (Italy)

Phone: +39 011 715210 / 712393 - Fax: + 39 011 726115

E-mail: info@contatto.tv

Web site: www.contatto.tv



CONTATTO & ARCHIMEDITA

We would like to cordially welcome you at the International Symposium “Risky crossroad: diabetes, coronary artery disease and heart failure”, which will take place in Hotel Metropol Palace in Belgrade, Serbia, on September 28-30th, 2017. This high profile scientific meeting is organized jointly by Serbian Academy of Sciences and Arts, Belgrade University Faculty of Medicine, Clinical Center of Serbia, Belgrade and Heart Failure Society of Serbia, and promoted by Fondazione Internazionale Menarini .

The topic of this international Symposium are two world-wide contemporary epidemics, type 2 diabetes and cardiovascular diseases, including heart failure. Type 2 diabetes and cardiovascular diseases are frequently associated, and diabetes is a major co-morbidity and independent risk factor in cardiovascular disease. This relation carries unfavorable clinical outcomes, with more frequent re-hospitalization and increased all-cause mortality. Both diseases share particular pathophysiological and metabolic features that worsen the clinical course of each other.

The program is an exceptional blend of basic science and clinical state-of-the-art knowledge, giving a picture of the breakthrough achievements in this area. It will present comprehensive approach to the recent and most important progresses in knowledge of pathophysiology, diagnosis and treatment of these diseases.

Most up-to-date treatment approaches, including medical treatment, interventional cardiology and surgery will be discussed. As an outstanding scientific event, this symposium will feature a prominent global faculty, and deliver precise and clinically relevant take-home messages.

Due to the kind support of Fondazione Internazionale Menarini, this extraordinary educational event is a unique opportunity for scientific dialogue and exchange of experience between diabetologists and cardiologists. Through the interactive education and mixture of exciting new information, the best algorithms in the diagnosis and treatment will be defined.

We are convinced that we will be successful in our mission.

Petar M. Seferović, Vladimir Kostić, Nebojša Lalić and Milika Ašanin
Co-presidents of the Meeting

PROGRAMME

**GENERAL ASSEMBLY
OF THE CITY OF BELGRADE/CITY HALL**

SEPTEMBER
AFTERNOON
28TH

Opening Ceremony

06.00 p.m. Welcome addresses

- **Petar M. Seferović** (Belgrade, RS)
- **Vladimir Kostić** (Belgrade, RS)
- **Nebojša M. Lalić** (Belgrade, RS)

06.15 p.m. **Main lectures**

Chairpersons: **Petar M. Seferović** (Belgrade, RS)
Nebojša M. Lalić (Belgrade, RS)

Visiting professorship lecture:

Acute heart failure and type 2 diabetes

- **Gerasimos Filippatos** (Athens, GR)

Pharmacologic glycemc management
and cardiovascular outcome trials:
current status and future perspectives

- **Nebojša M. Lalić** (Belgrade, RS)

06.45 p.m. Welcome cocktail

Session I

Pathophysiology, molecular and translational aspects

Chairpersons: **Francesco Cosentino** (Stockholm,SE)
Ellen Seely (Boston,USA)

- 09.00 a.m. Molecular and pathophysiological mechanisms of coronary artery disease/heart failure in type 2 diabetes
• **Zoltan Papp** (Debrecen, HU)
- 09.20 a.m. Epigenetic signature and coronary artery disease/heart failure in type 2 diabetes: a clinical perspective
• **Francesco Cosentino** (Stockholm,SE)
- 09.40 a.m. Insulin resistance, coronary artery disease, and heart failure in type 2 diabetes
• **Wolfram Doehner** (Berlin,DE)
- 10.00 a.m. Epidemiology and outcomes of heart failure and type 2 diabetes
• **Mark Petrie** (Glasgow,UK)
- 10.20 a.m. Panel discussion
- 10.40 a.m. Coffee break

Session II **Dysglycemia** **and coronary artery disease/heart failure**

Chairpersons: **Eberhard Standl** (Munich, DE)
Massimo Piepoli (Piacenza, IT)

- 11.00 a.m. Glucose abnormalities
and coronary artery disease/heart failure:
scope of the problem and diagnostic strategies
• **Eberhard Standl** (Munich, DE)
- 11.20 a.m. Cardiovascular continuum: from insulin resistance
to coronary artery disease/heart failure
• **Wolfram Doehner** (Berlin, DE)
- 11.40 a.m. Pregnancy complications predict future
cardiovascular disease and diabetes
• **Ellen Seely** (Boston, USA)
- 12.00 a.m. Coronary artery by-pass surgery as a treatment
option in patients with type 2 diabetes
• **Mark Petrie** (Glasgow, UK)
- 12.20 p.m. Panel discussion
- 12.40 p.m. Lunch

Session III**Coronary artery disease/heart failure
risk evaluation/prevention in type 2 diabetes**

Chairpersons: **Wolfram Doehner** (Berlin, DE)
Zoltan Papp (Debrecen, HU)

- 13.40 p.m. Coronary artery disease/heart failure risk assessment in patients with dysglycaemia
• **Massimo Piepoli** (Piacenza, IT)
- 14.00 p.m. Imaging screening in coronary artery disease/heart failure in type 2 diabetes
• **Dragoș Vinereanu** (Bucharest, RO)
- 14.20 p.m. Long-term intensive lifestyle interventions in coronary artery disease/heart failure in type 2 diabetes
• **Katarina Lalić** (Belgrade, RS)
- 14.40 p.m. Glucose control and optimal glucose targets in patients with coronary artery disease/heart failure in type 2 diabetes
• **Eberhard Standl** (Munich, DE)
- 15.00 p.m. Panel discussion
- 15.20 p.m. Coffee break

Session IV

Clinical aspects of coronary artery disease and heart failure in type 2 diabetes

Chairpersons: **Suhail Allaqaband** (Milwaukee, USA)
Katarina Lalić (Belgrade, RS)

- 15.40 p.m. Screening of glucose metabolism impairment
in coronary artery disease/heart failure
• **Dimitrios Farmakis** (Athens, GR)
- 16.00 p.m. Diagnostic aspects of coronary
artery disease/heart failure in type 2 diabetes
• **Bijoy Khandheria** (Milwaukee, USA)
- 16.20 p.m. Acute coronary syndrome/acute heart failure
in type 2 diabetes
• **Arsen D. Ristić** (Belgrade, RS)
- 16.40 p.m. Arrhythmias/sudden cardiac death in coronary
artery disease and heart failure in type 2 diabetes
• **Veselin Mitrović** (Bad Neuheim, DE)
- 17.00 p.m. Panel discussion

Session V
Diagnosis and treatment
of coronary artery disease in type 2 diabetes

Chairpersons: **Paul Valensi** (Paris, FR)
Dragoș Vinereanu (Bucharest, RO)

- 09.00 a.m Old and new biomarkers in the diagnosis of coronary artery disease/heart failure in type 2 diabetes
• **Sanja Stanković** (Belgrade, RS)
- 09.20 a.m Antihyperglycemic treatment in acute coronary syndrome/optimal medical treatment of chronic coronary disease in type 2 diabetes
• **Giuseppe Rosano** (London, UK)
- 09.40 a.m Percutaneous interventions in the treatment of coronary artery disease in type 2 diabetes
• **Suhail Allaqaband** (Milwaukee, USA)
- 10.00 a.m Panel discussion
- 10.20 a.m Coffee break

Session VI

Heart failure in type 2 diabetes

Chairpersons: **Veselin Mitrović** (Bad Neuheim, DE)
Sanja Stanković (Belgrade, RS)

- 10.40 a.m. Diabetic cardiomyopathy
• **Petar M. Seferović** (Belgrade,RS)
- 11.00 a.m. Silent ischemia in coronary artery disease/heart failure in type 2 diabetes: frequent and ominous
• **Paul Valensi** (Paris, FR)
- 11.20 a.m. Pharmacological management of heart failure in type 2 diabetes
• **Marco Metra** (Brescia, IT)
- 11.40 p.m. Glucose lowering treatment in patients with heart failure
• **Giuseppe Rosano** (London, UK)
- 12.00 p.m. Panel discussion
- 12.20 p.m. Concluding remarks
Petar M. Seferović (Belgrade,RS)
- 12.40 p.m. Lunch

FACULTY LIST

- **S. Allaqaband**

University of Wisconsin School of Medicine and Public Health
Cardiology fellowship Laboratory
Catheterization Laboratory
Aurora St. Luke's Medical Center
Milwaukee, Wisconsin, US

- **F. Cosentino**

Cardiology Unit Department of Medicine Karolinska University Hospital, Solna, SE

- **W. Doehner**

Center for Stroke Research Berlin
Department of Cardiology
Charité-Universitätsmedizin Berlin
Berlin, DE

- **D. Farmakis**

Heart Failure Unit,
Department of Cardiology
Attikon University Hospital
University of Athens
Medical School, Athens, GR
European University of Cyprus
Medical School, Heart Failure Unit
Nicosia, Cyprus, CV

- **G. Filippatos**

National and Kapodistrian
University of Athens
Head, Heart Failure Unit
Athens University Hospital
Attikon, GR

- **B. Khandheria**

University of Wisconsin School of Medicine Echocardiography Services Global Health and Executive Program Aurora Health Care, Milwaukee, Wisconsin, US

- **N. M. Lalić**

Faculty of Medicine
University of Belgrade
Clinic for Endocrinology
Diabetes and Metabolic Diseases
Clinical Center of Serbia
Belgrade, RS

- **K. Lalić**

Faculty of Medicine
University of Belgrade
Clinic for Endocrinology
Diabetes and Metabolic Diseases
Clinical Center of Serbia
Belgrade, RS

- **Marco Metra**

Cardiology Unit
Department of Medical
and Surgical Specialties
Radiological Sciences and Public Health
University of Brescia
"Spedali Civili" Hospital, Brescia, IT

- **V. Mitrović**

Department of Cardiology
Kerckhoff-Klinik, Bad Nauheim
Germany, DE

FACULTY LIST

- **Z. Papp**
Medical Faculty
of the University of Debrecen
Division of Clinical Physiology
University of Debrecen
Faculty of Medicine
Department of Cardiology
Division of Clinical Physiology
Research Center
for Molecular Medicine
Debrecen, HU
- **M. Petrie**
University of Glasgow
Golden Jubilee National Hospital
and Glasgow Royal Infirmary
Glasgow, UK
- **M. F. Piepoli**
Guglielmo da Saliceto Hospital
Piacenza, IT
- **A. D. Ristić**
Department of Cardiology
Clinical Center of Serbia
and Belgrade University
School of Medicine, Belgrade, RS
- **G. Rosano**
St George's Hospital NHS Trust
University of London, UK
- **E. Seely**
Clinical Research, Endocrinology
Diabetes & Hypertension Division
Faculty Development
Department of Medicine
Brigham and Women's Hospital
Harvard Medical School
Boston, Massachusetts, US
- **P. M. Seferović**
Association of the ESC
Serbian Academy of Sciences
and Arts, Internal Medicine
University of Belgrade School
of Medicine
Belgrade University Medical Center
Heart Failure Society of Serbia
Belgrade, RS
- **S. Stanković**
Institute for Medical Biochemistry
Clinical Centre of Serbia, Belgrade, RS
- **E. Standl**
Forschergruppe Diabetes eV
at Munich Helmholtz Centre,
Munich, DE
- **P. Valensi**
Department
of Endocrinology-Diabetology-Nutrition
Jean Verdier Hospital
Université Paris, Bondy, FR
- **Dragoș Vinereanu**
University of Medicine
and Pharmacy Carol Davila
Bucharest, RO

GENERAL INFORMATION

Meeting venue

The venue for the Meeting will be:
September 28th at "General Assembly of the City of Belgrade/City Hall"
Street: Dragoslava Jovanovica 2 - Belgrade

September 29th - 30th at "Hotel Metropol Palace",
Street: Bulevar Kralja Aleksandra 69 - Belgrade. Phone: (381)(11) 3333100

Secretariat during the Meeting

The Secretariat will be open at the following times:
Thursday, September 28th from 6.00 p.m. to 6.45 p.m.
Friday, September 29th from 9.00 a.m to 5.00 p.m.
Saturday, September 30th from 9.00 a.m to 2.00 p.m.

Official language

The official language of the Meeting will be English.

Registrations

Registration is free of charge. You can participate until no more places are availables
Please confirm your participation to the Organizing Secretariat:
Contatto S.r.l. - Phone: +39 011 715210 / 712393 - Fax: + 39 011 726115
E-mail: info@contatto.tv within September 20th, 2017.

European CME Accreditation

The event has been accredited by the European Board for Accreditation in Cardiology (EBAC) for 13 European CME Credits.
The CME credits will be recognized only after full attendance of all sessions and a minimum score of 75% of correct answers in the learning questionnaires. Completion of the Registration Form, the Learning & Assessment questionnaires are compulsory.

Serbian CME Accreditation

The Congress program is accredited by the Medical Council of Serbia with 6 CME credit hours for participants and 10 for lecturers (No. 153-02-4320/2016-01, Ev.No. A-1-2118/17)

Technical facilities

A Speakers' service center with PCs (Windows and Macintosh operating systems) will be available for Speakers to preview and finalize their presentations.
Speakers are kindly requested to submit their presentations on USB flash drive, CD or DVD to the Speakers' service center technicians at least one hour before their talks.

Speakers' service center opening hours

Friday, September 29th from 9.00 a.m to 5.00 p.m.
Saturday, September 30th from 9.00 a.m to 2.00 p.m.

Lunches and Coffee Breaks

Will be provided within the conference premises.

Attendance certificate

Both attendance certificates will be issued at the accreditation/registration desk following full attendance at the Conference.

A series of 18 horizontal dashed lines, evenly spaced, spanning the width of the page, intended for writing or drawing.

PROMOTED BY:



FONDAZIONE
INTERNAZIONALE
MENARINI



CONTATTO & ARCHIMEDICA

.....
.....